

pixelplus[™]
xcell-i v3

Cost effective fine pitch LED display
for indoor installation applications.



Our Pixel Plus Xcell-i v3 panel is tailored made for indoor retail, corporate and house of worship installation applications in a compact, light, portable and multi-purpose cabinet, allowing easy assembly and multiple mounting modes.

xcell-i v3

Key Features



HDR Ready



16:9 Aspect Ratio



Generic Cables



Status Diagnostic



Front/Rear Access



Floating Connector



Quick Installation



6-axis Alignment



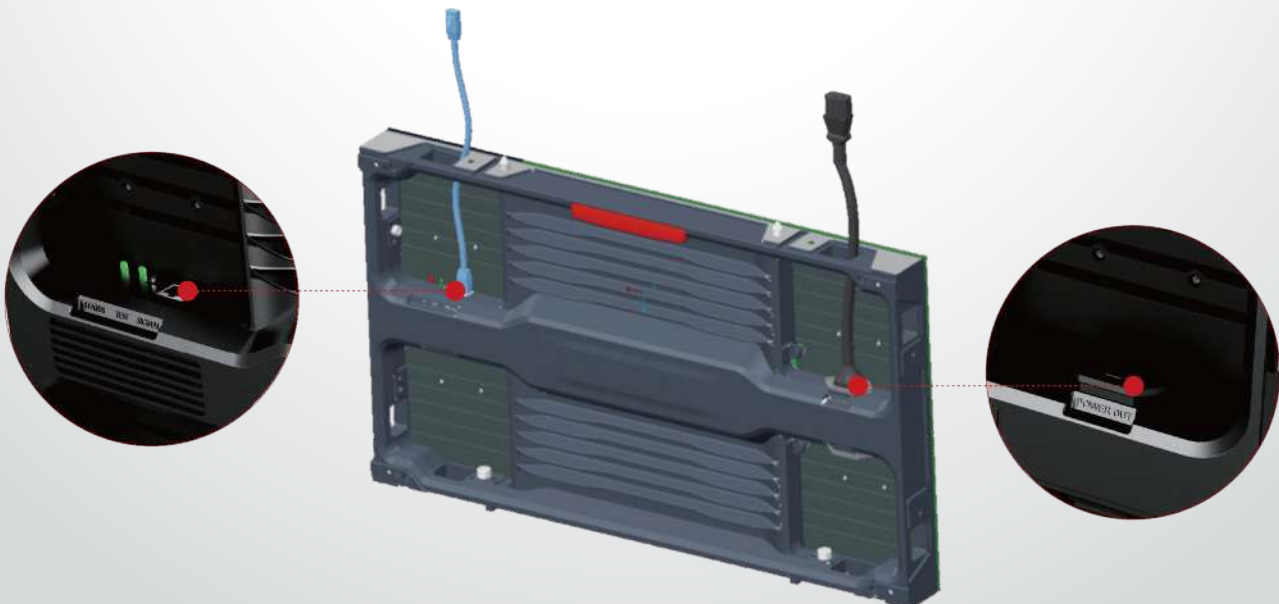
Easy Maintenance

Technology Advantages



Generic Cables

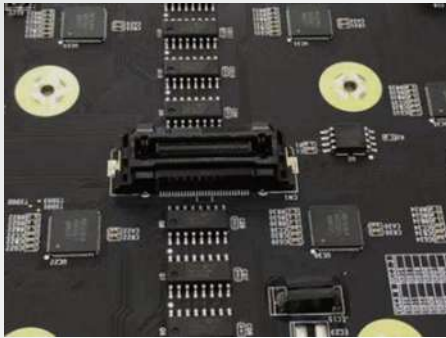
- Concise appearance, off the shelf power and signal, ensuring the stable and reliable quality at a very low cost.
- Cables between cabinets are connected inside, without adding up extra space.



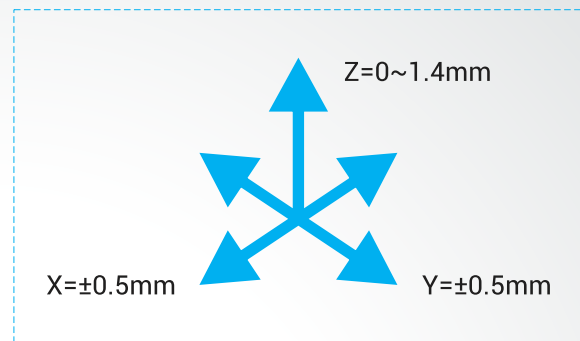


Floating Connector

- Allowed position tolerance.
- Resistant to torsion and shock.
- Reduces stress on solder feet during fitting.



Chimeric Correction



Front / Rear Installation

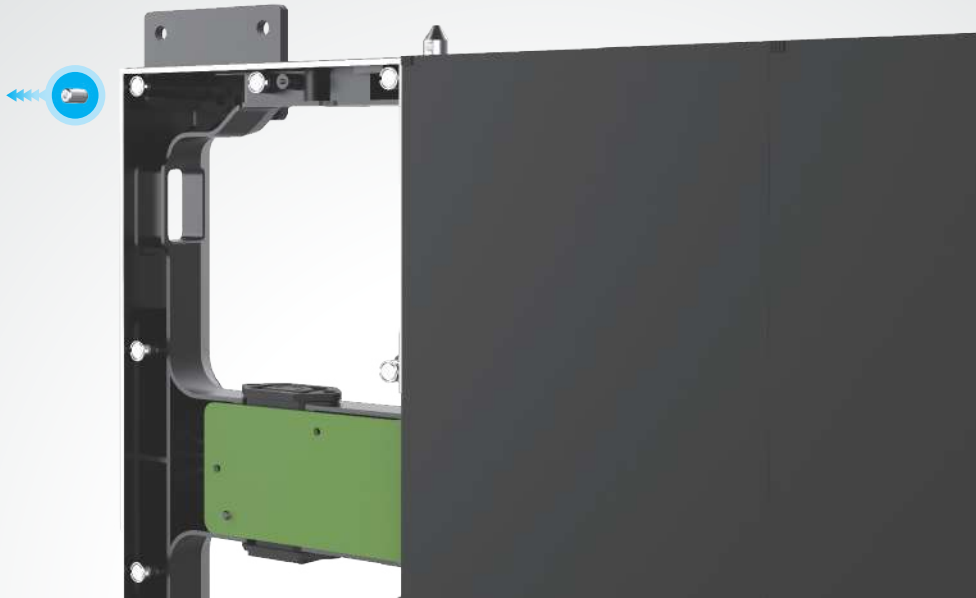
- Completely front disassembly or rear disassembly.
- Only need to remove two LED modules for easy maintenance.
- Easier rear installation.





6-axis Alignment

- Module can be easily adjusted in Z-Direction, and flatness can be optimized again.
- A uniform tool can be used for X/Y/Z 6-axis adjustment between cabinets.



High Dynamic Range (Optional)

- Support HDR function to meet more display requirements.





Status Diagnostic

- Status indicators and button are in the main frame of the cabinet structure, and can be accessed from both front and back.



Aluminium Alloy Cabinet

- Aluminium alloy cabinet with high rigidity and high splicing accuracy.
- Magnetic and vacuum tools are options for maintenance.





Customizable Right-angle Splicing



Customizable Concave Splicing

- Angle between modules 0~4.5°
- Max angle between cabinets 18°



Applications



Specifications

Pitch	1.25mm	1.56mm	1.87mm	2.5mm
LED Type	SMD	SMD	SMD	SMD
Module Resolution (W x H)	120x270	96 x 216	80 x 180	60 x 135
Module Dimensions (W x H)	150 x 337.5mm	150 x 337.5mm	150 x 337.5mm	150 x 337.5mm
Module Composition (W x H)	4x1	4x1	4x1	4x1
Cabinet Resolution (W x H)	480x270	384 x 216	320 x 180	240 x 135
Cabinet Dimensions (W x H x D)	600 x 337.5 x 53 (Front Access), 500 x 337.5 x 64 (Front & Rear Access)			
Cabinet Area (m ²)	0.2025	0.2025	0.2025	0.2025
Weight (kg/cabinet; kg/m ²)	6; 30 (Front Access), 7; 35 (Front & Rear Access)			
Pixel Density (point/m ²)	640000	409600	284444	160000
Flatness (mm)	≤0.1	≤0.1	≤0.1	≤0.1
IP Level	IP30	IP30	IP30	IP30
Brightness (nits)	600-800	600-800	600-800	600-800
Colour Temperature	3000 - 10000			
Viewing Angle (H/V)	160/140°	160/140°	160/140°	160/140°
Deviation of LED Luminance Centre	<3%	<3%	<3%	<3%
Brightness Uniformity	≥98%	≥98%	≥98%	≥98%
Contrast Ratio	5000:1	5000:1	5000:1	5000:1
Power Consumption (max; avg)/m ²	500W; 167W	500W; 167W	500W; 167W	500W; 167W
Chromaticity Uniformity (after correction)	± 0.003Cx,Cy within			
Input Voltage (V)	AC100-240V (50-60Hz)			
Installation	Front / Rear			
Drive Mode	Common anode (Common cathode PWN (optional))	Common anode (Common cathode PWN (optional))	Common anode	Common anode
Refresh Rate @60Hz	≥ 3840	≥ 3840	≥ 3840	≥ 3840
Frame Rate Processing (Hz)	50 & 60	50 & 60	50 & 60	50 & 60
Lifetime (Hrs)	100,000	100,000	100,000	100,000
Operating Temperature (°C)	-20-40	-20-40	-20-40	-20-40
Storage Temperature (°C)	-30-60	-30-60	-30-60	-30-60
Operating Humidity (RH)	10~90% no condensation			
Storage Humidity (RH)	10~80% no condensation			